



InterSole

**Roof integration
with standard modules**

www.UbbinkSolar.com
Cologne, Germany

InterSole

Roof integration with any standard module



- Easy mounting
- Very good ventilation of modules and roof
- Watertight layer of HDPE-plates
- All supports aluminium / stainless steel
- TÜV proof



InterSole

Roof integration with any standard module



- Roof integration with any framed module
- TÜV proof

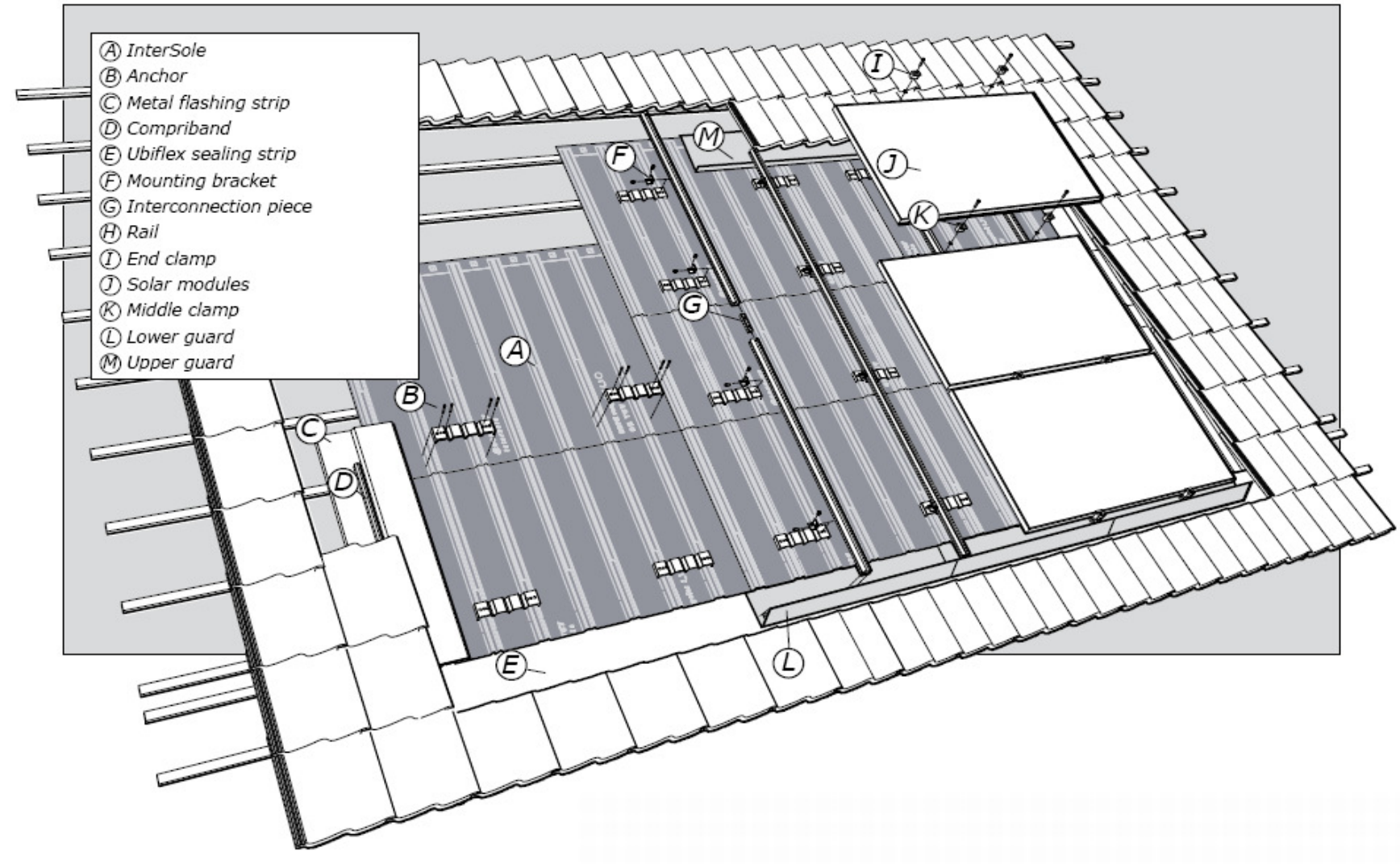


InterSole

Roof integration with any standard module



ubink
S O L A R

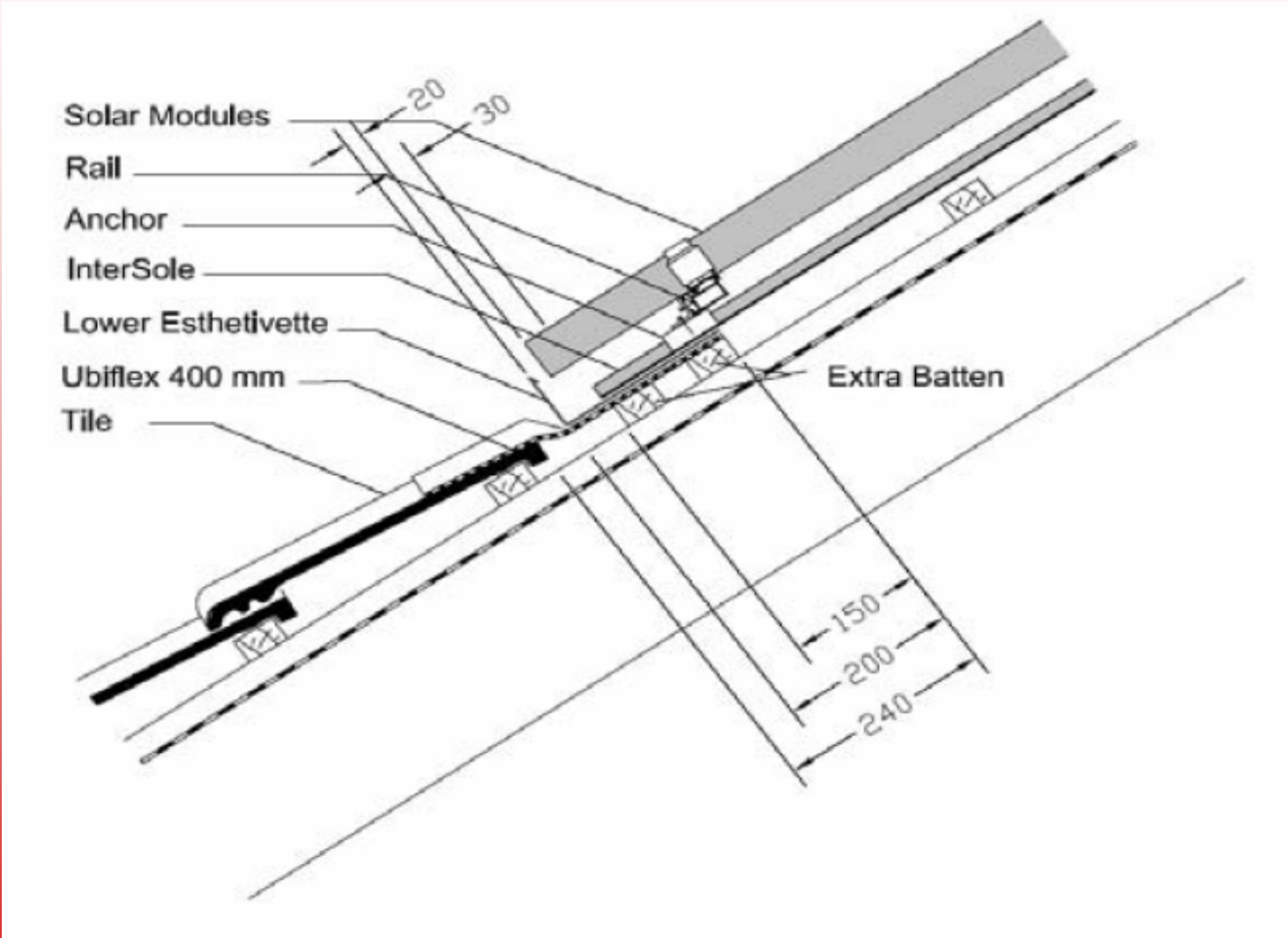


InterSole

Roof integration with any standard module



ubbink
S O L A R



InterSole

Example Cologne, Germany (Amsterdamer Str.)



InterSole

Example Cologne, Germany (Amsterdamer Str.)



Mounting modules vertically

InterSole

Example Cologne, Germany (Amsterdamer Str.)



InterSole

Roof integration with any standard module



Mounting modules horizontally

InterSole

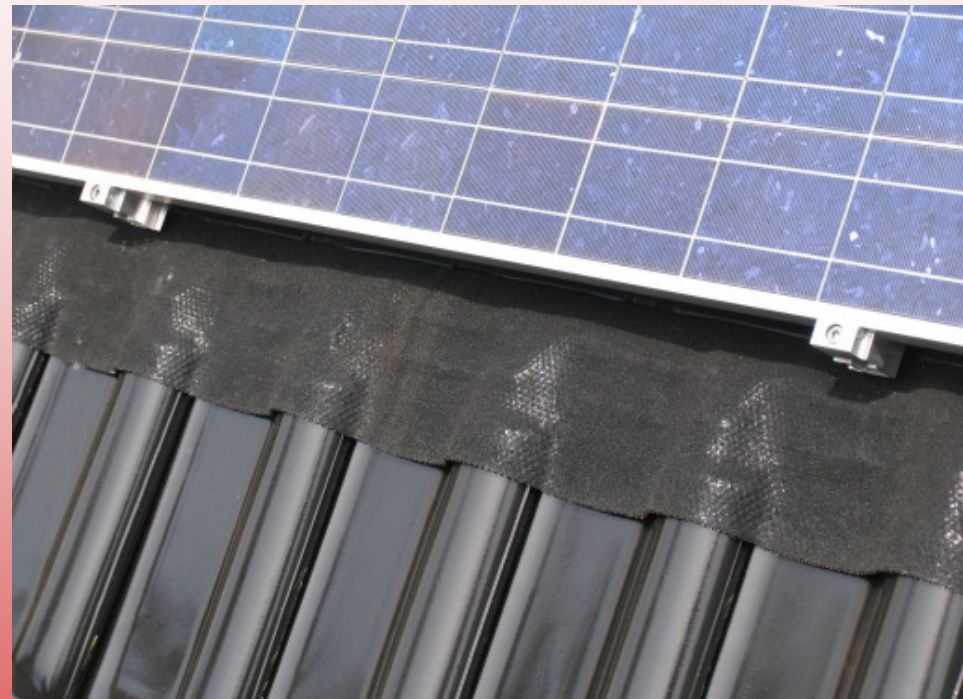
Roof integration with any standard module



Ubiflex – Alternative to lead



- Watertight aprons on the lower side of module fields
- Any watertight connection to windows and other roof elements
- Lead-free, environment-friendly
- Easy to form
- Quick mounting



Ubiflex – Alternative to lead



- Lightweight
- UV-resistant
- Long-life
- Color-resistant
- Self-healing

